



Shoreline climate resilience in Marin County

California Coastal Information
Exchange and Project Fair

June 15, 2022

Julia Elkin, Senior Planner
Marin County DPW
Water Resources Division





10" of sea level rise
with 100-year storm

Marin Ocean Coast Sea Level Rise Vulnerability Assessment



Collaboration: Sea-Level Marin Adaptation Response Team
Marin County Community Development Agency
May 2016 | Marin County, CA | marinslr.org

C-SMART, 2016
(West Marin's ocean coast)

Marin Shoreline Sea Level Rise Vulnerability Assessment



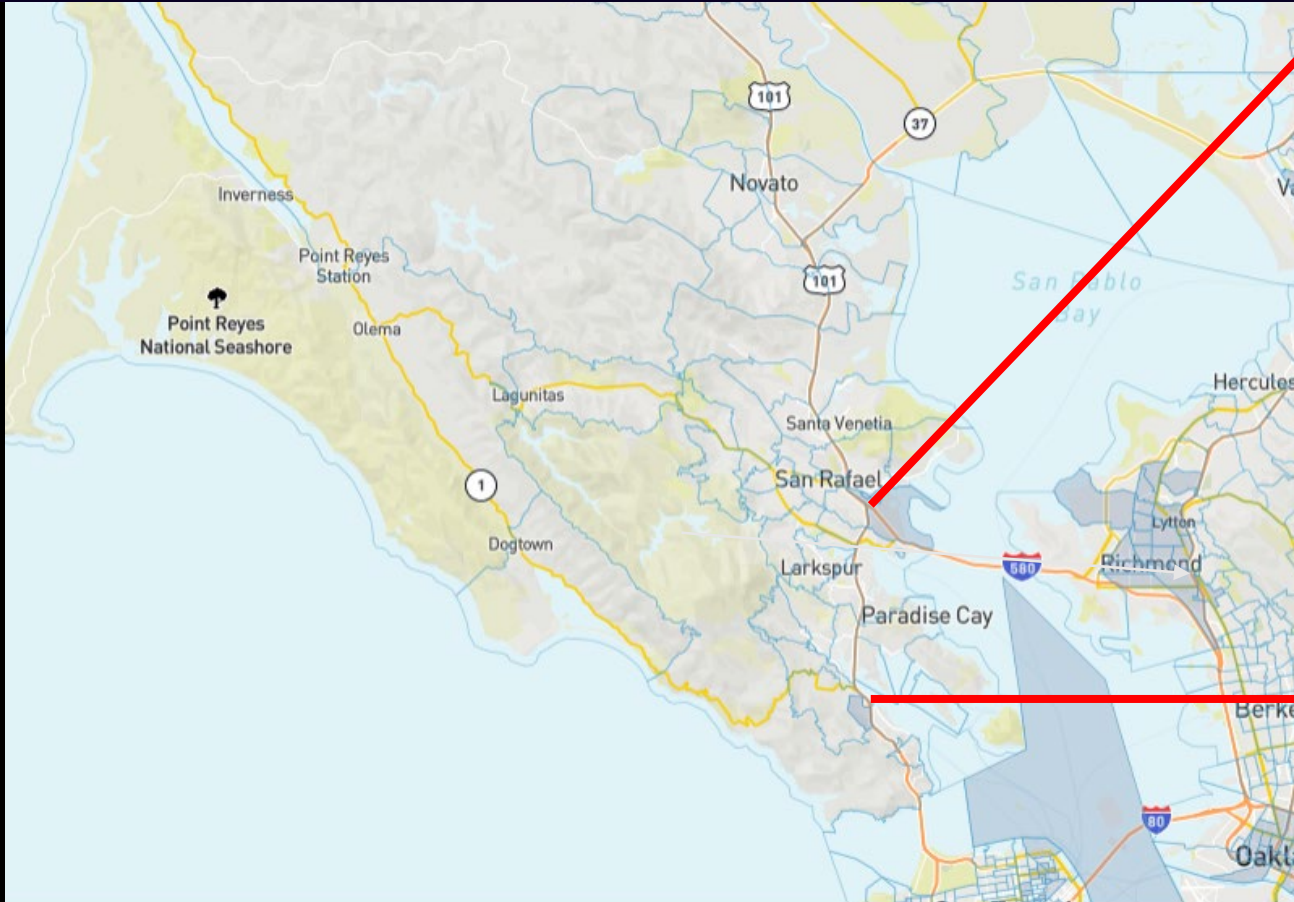
Bay Waterfront Adaptation & Vulnerability Evaluation
Prepared by BVB Consulting LLC for Marin County Department of Public Works
June 2017 | County of Marin, CA | marinslr.org

BayWAVE, 2017
(East Marin's bay shoreline)

MARIN

Source: racecounts.org

MARIN RANKS THE 2ND MOST RACIALLY DISPARATE COUNTY IN CALIFORNIA.



source: CEQ's Climate & Economic Justice Screening Tool
<https://screeningtool.geoplatform.gov/en/#3/33.47/-97.5>

A screenshot of a web-based map interface. The map shows a highlighted area in San Rafael, CA, near the San Pablo Bay. The interface includes a search bar at the top, a list of states on the left (48, AK, HI, PR, GU, AS, MP, VI), and a sidebar on the right with various categories: Climate change, Energy, Health, Housing, Legacy pollution, Transportation, Water and wastewater, and Workforce development. A 'Send feedback' button is also present. A text box on the right indicates that the tract is considered disadvantaged because it meets more than 1 burden threshold AND the associated socioeconomic threshold. The text 'Canal neighborhood (City San Rafael)' is overlaid at the bottom of the screenshot.

A screenshot of a web-based map interface showing a highlighted area in Marin City, CA. The interface is similar to the previous screenshot, with a search bar, a list of states, and a sidebar with categories: Climate change, Energy, Health, Housing, Legacy pollution, Transportation, Water and wastewater, and Workforce development. A text box on the right indicates that the tract is considered disadvantaged because it meets more than 1 burden threshold AND the associated socioeconomic threshold. The text 'Marin City (unincorp. County)' is overlaid at the bottom of the screenshot.

San Rafael Canal Community Resilience

Led by City of San Rafael



Bolinas Lagoon Wye Wetlands Resiliency

Led by Marin County Parks



Photo: Ralph Camiccia



Deer Island Tidal Wetland Restoration

Led by Marin County Flood Control



Evolving Shorelines at Bothin Marsh

Led by Marin County Parks



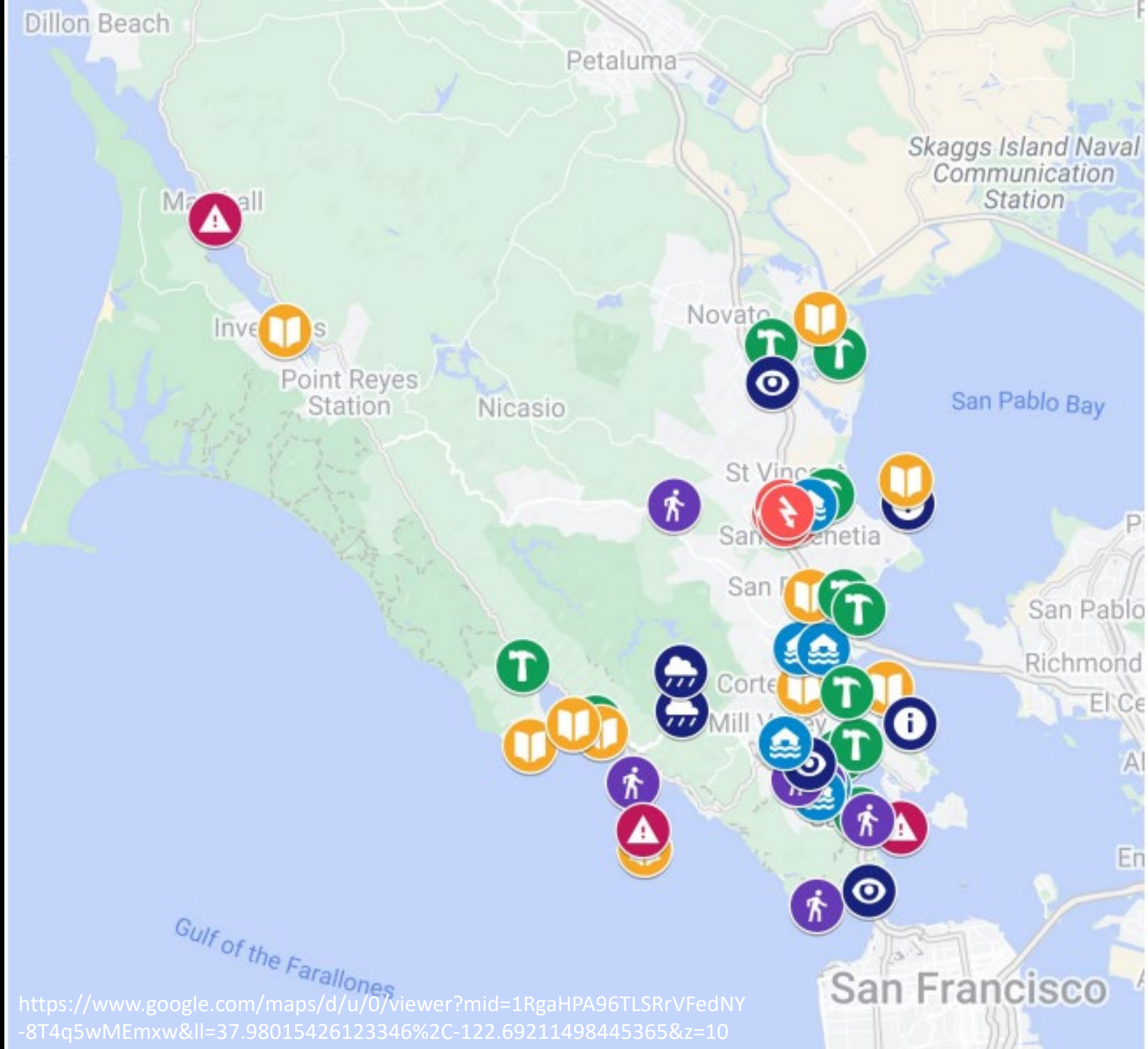
Stinson Adaptation and Resilience Collaboration

led by Marin County Community Development Agency



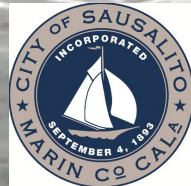
Climate Resilience Efforts in Marin

- Community Engagement
- Vulnerability Assessments
- Local Adaptation Resources
- Adaptation Planning
- Flood Risk Reduction
- On-the-ground Projects

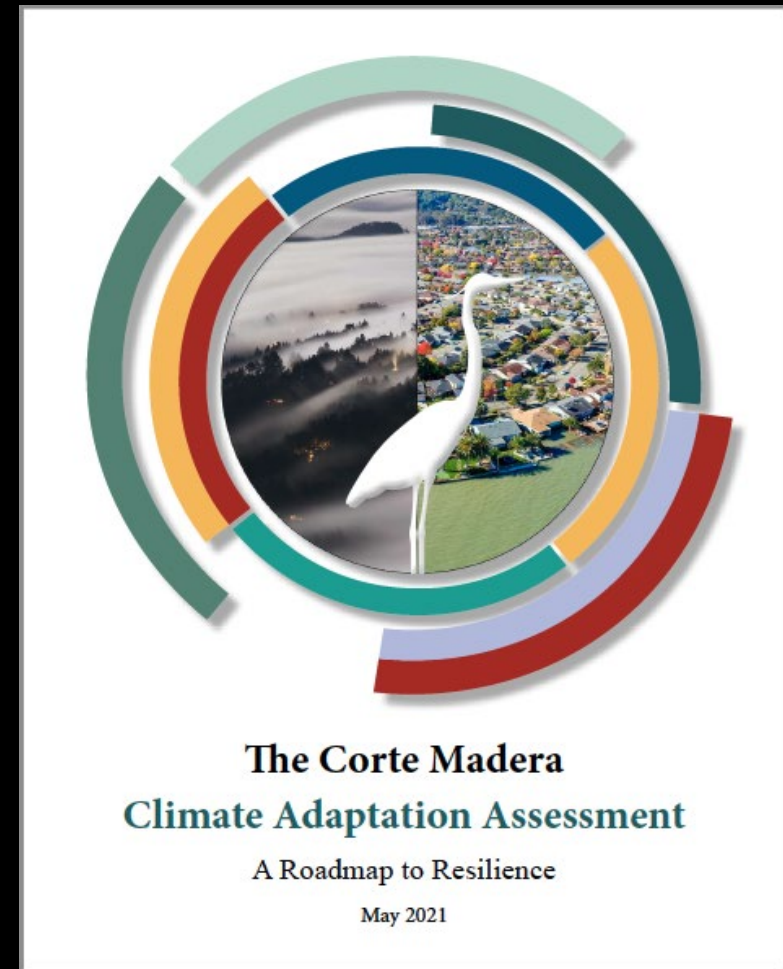


<https://www.google.com/maps/d/u/0/viewer?mid=1RgaHPA96TL5RrVFedNY-8T4q5wMEmxw&ll=37.98015426123346%2C-122.69211498445365&z=10>

Shoreline Master Plan for Sausalito



Town of Corte Madera Climate Adaptation Assessment



CalTrans Adaptation Planning HWY 37 and Manzanita/Marin City (101/1)



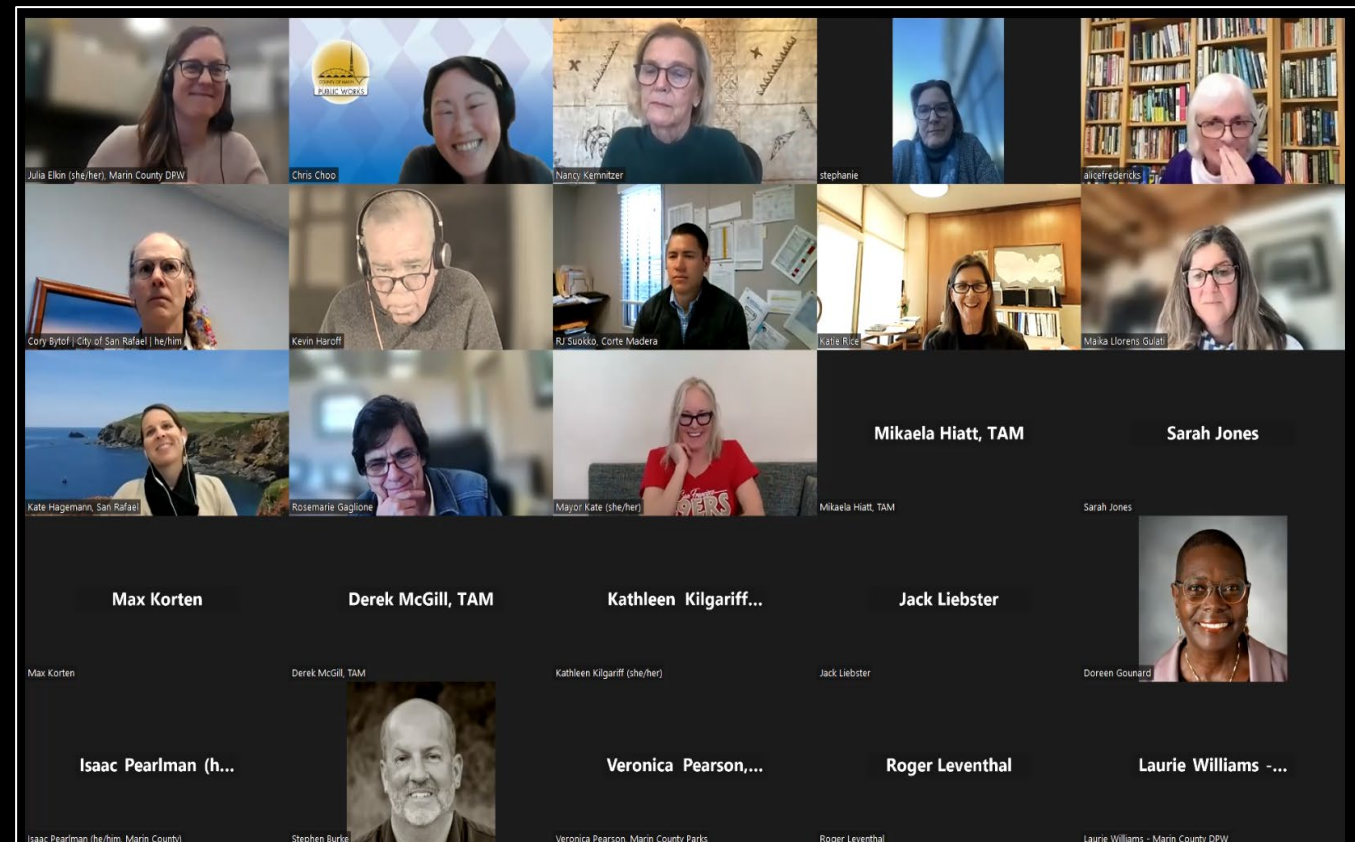
Transportation Authority of Marin (TAM) transportation & SLR



Sea level rise adaptation: **governance**

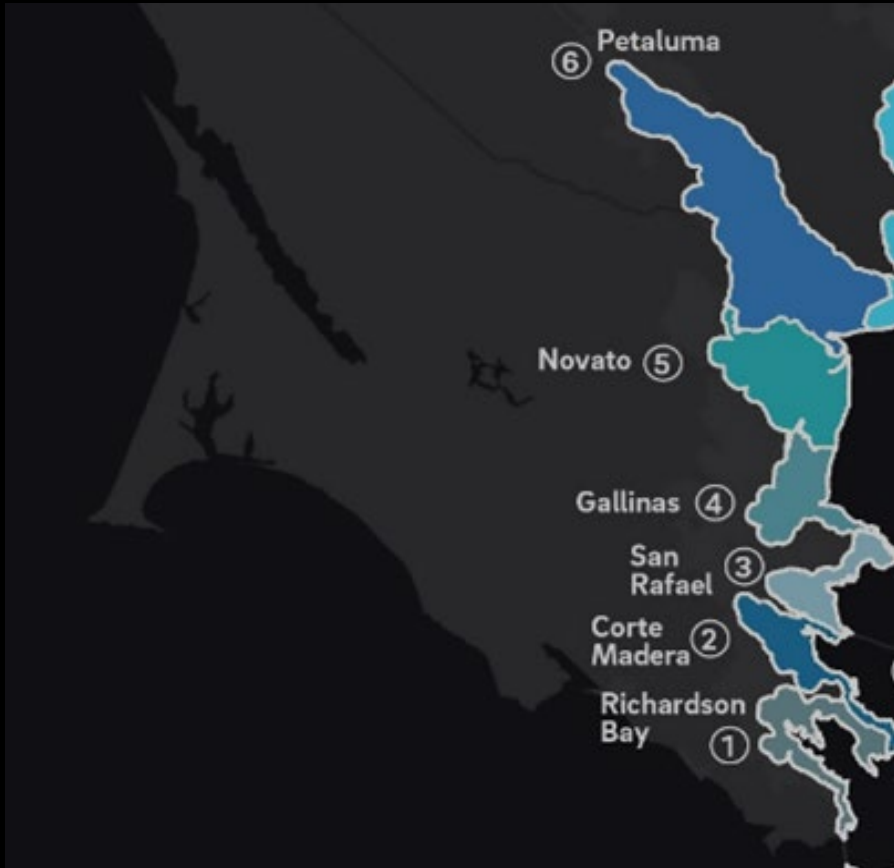
“if you want to go fast, go alone; if you want to go far, go together”
– Proverb

- Vulnerability Assessment: county and local jurisdictions sharing scenarios
- BayWAVE Executive Steering Committee
- Local Hazard Mitigation Plan
- Countywide Plan Update
- Developing sea level rise project tool for transportation assets
- Coordinate staff across orgs and scales
- Regional coordination including Bay Adapt, CHARG, BayCAN, NBWRA



Governance challenges

WHAT ORGANIZATIONAL STRUCTURE(S) CAN HELP US NAVIGATE HARD DECISIONS AHEAD?



Governance needs

- Ensure Marin part of regional policy & funding discussions
- Support building solutions across numerous entities, while addressing different shoreline reaches with different needs



China Camp State Park, San Rafael, California

Thank you

Julia Elkin, Senior Planner
Marin County DPW
jelkin@marincounty.org