



Improving Resilience at Moss Landing Marine Laboratory

June 15, 2023

Jessica Trask, PhD

Sr. Director of Research Services



#1 MOST TRANSFORMATIVE UNIVERSITY —*Money magazine*



The Diversity of our
Student Population Reflects
the Diversity of the World



73%

of SJSU students
are people of
color



SJSU undergraduates can participate in research, field study and internships — opportunities other universities reserve for graduate students.

That's why employers say our graduates are extremely well prepared and hit the ground running.

-

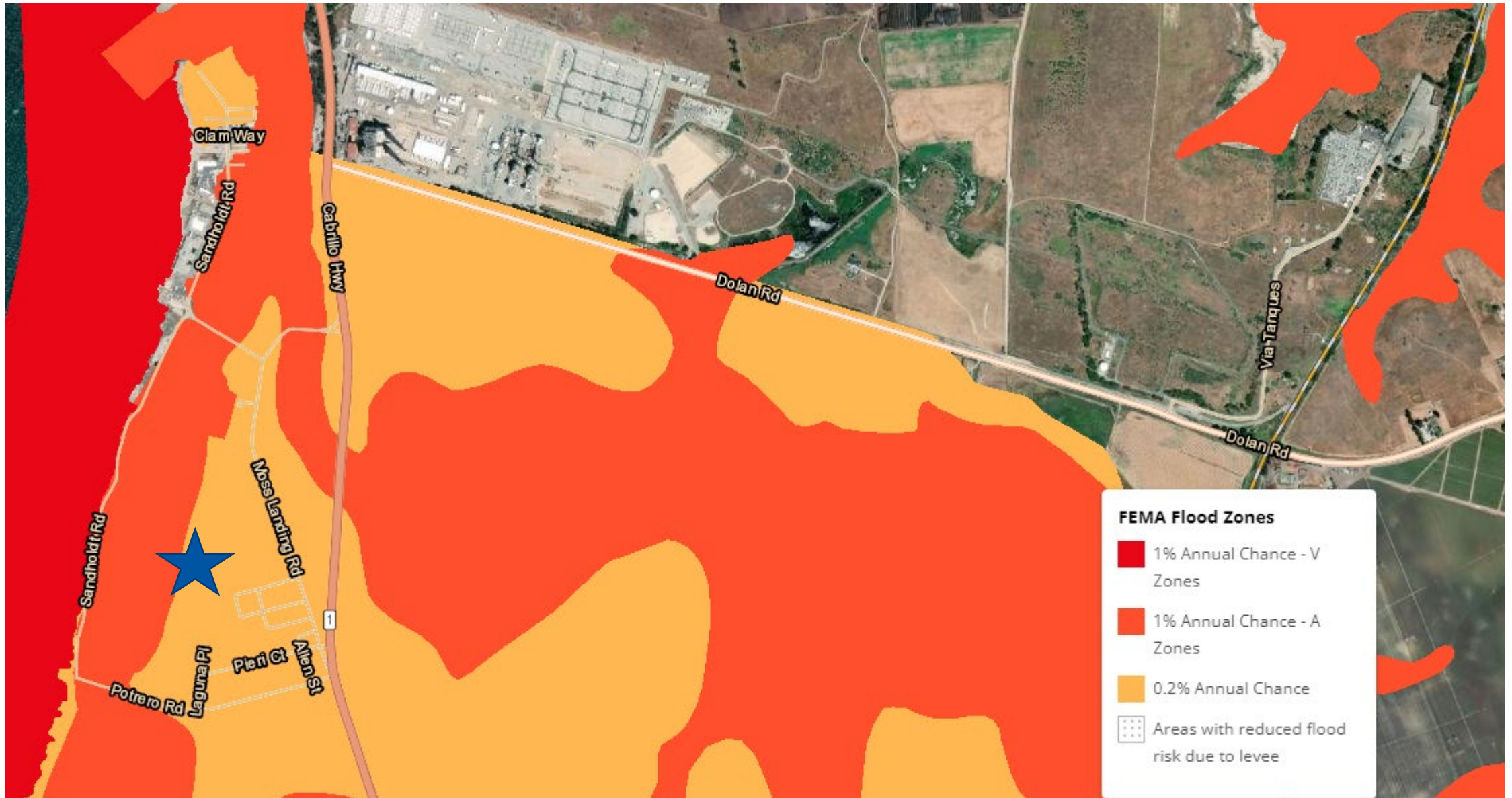




“The mission of MLML is to provision the marine scientists of the future. This means that undergraduate and graduate students are provided with unparalleled access to faculty advisors and teachers, research facilities, and an incredible local marine environment. Our primary goal is to provide students with the necessary skills and training to succeed in academia, governmental agencies, conservation, and management to serve societal needs involving marine issues.”



Current FEMA Flood Zones



Projected Sea Level Rise by 2060



Specific Needs the Project Would Address:



- Repaving and raising the ground level to reduce sensitivity to sea level rise
- Rebuilding electrical network to higher standards
- Upgrading the seawater intake system to reduce interruptions due to siltation
- Restore the high -tide portion of Moss Landing Beach to improve their buffering capacity to storms and sea level rise

Who Will Benefit from the Project?



- SJSU and CSU students
- MBARI and other MLML neighbors who utilize the seawater intake system
- Improved coastal buffering will protect nearby low-lying areas
- MLML improvements would preferably be aligned with infrastructure improvements in the Moss Landing community

Benefits to Local Economy:



- MLML Marina rents space to local fishing communities
- MLML hosts world -leading aquaculture facilities.

Questions?

